

Flat (EPC Rating: C)

# FLAT 10, MEYRICK COURT MEYRICK AVENUE, LUTON, LU1 5JP

Per month

## £1,200 Per

**McLains**  
— ESTATE AGENCY —



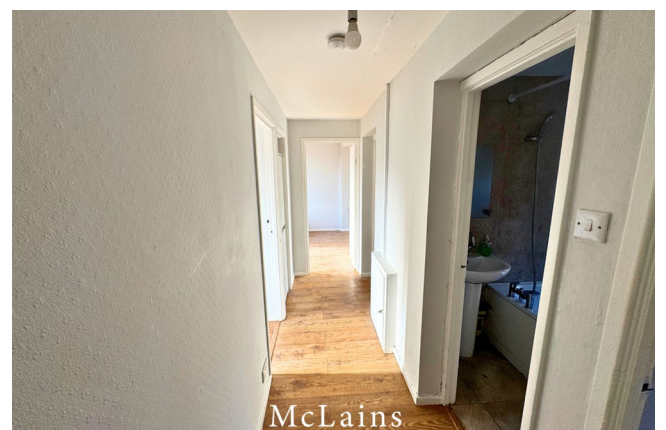
# 2 Bedroom Flat located in Luton

Located in the desirable area of Meyrick Avenue, Luton, this charming flat offers a perfect blend of comfort and convenience. The property features a well-appointed reception room that serves as an inviting space for relaxation and entertainment.

The flat comprises two spacious bedrooms, providing ample room for rest and personal space, making it ideal for small families, couples, or individuals seeking a serene living environment. The bathroom is thoughtfully designed, ensuring functionality and comfort for daily routines.

This property is situated in a vibrant community, with local amenities and transport links just a stone's throw away, enhancing the appeal for those who value accessibility.

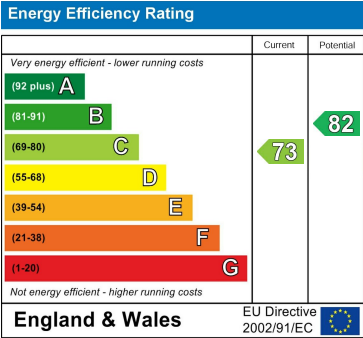




Council Tax Band

A

Energy Performance Graph



Call us on

01582 441225

info@mclains.co.uk  
mclains.co.uk

Agents Note: Whilst every care has been taken to prepare these particulars, they are for guidance purposes only. All measurements are approximate and are for general guidance purposes only and whilst every care has been taken to ensure their accuracy, they should not be relied upon and potential buyers are advised to recheck the measurements.